

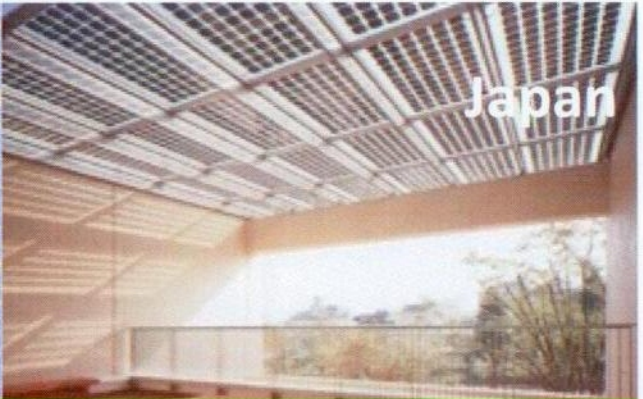


SoCalSolarSystem.com

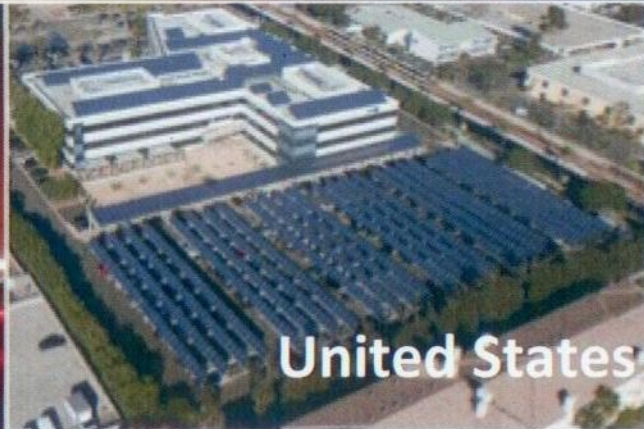
Solar Energy and Save

1.877.365.2400





SO CAL SOLAR SYSTEM



Our Commitment

- Beliefs and Sincerity
- Hope and Peace
- Love and Prosperity



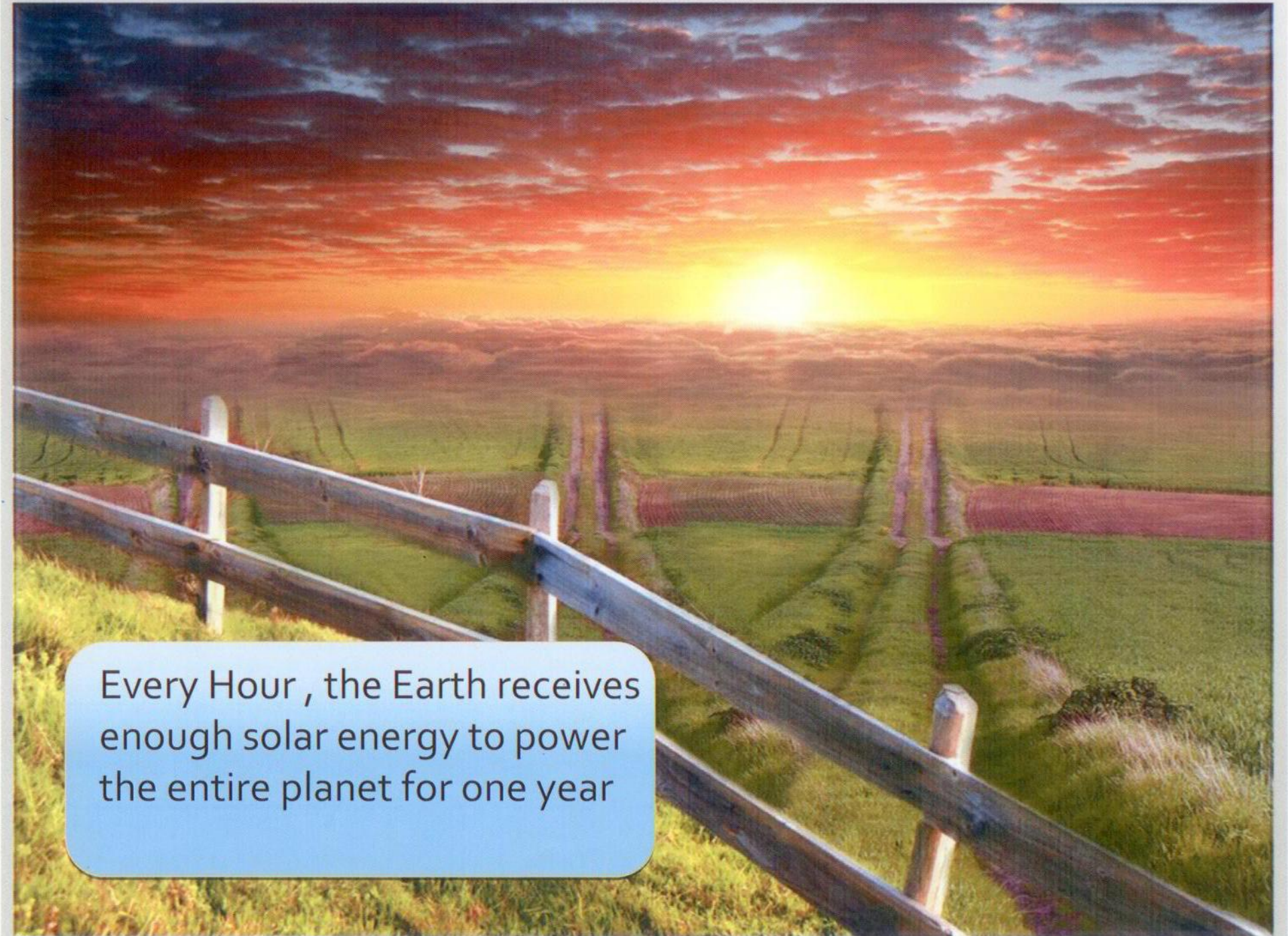
Serving Southern California yesterday, today and tomorrow

Protect the Earth

Benefit our future generations



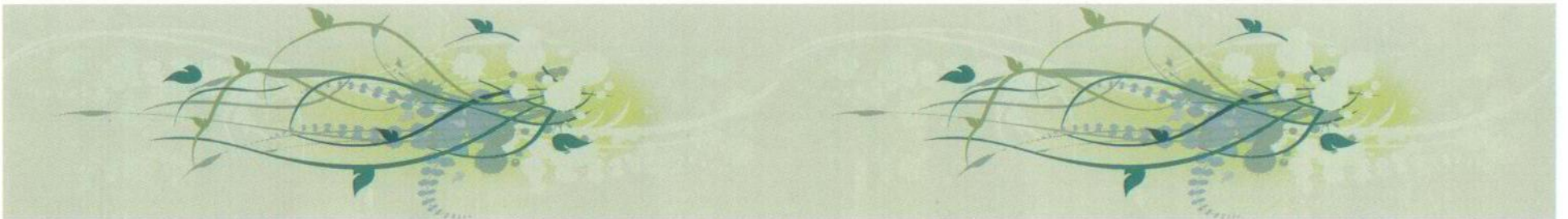
- Over its 35-year expected life, a 10 kW system will
- Provide the equivalent CO₂ reduction as planting 1450 trees.
 - It will produce 575,000 kilowatt hours of electricity, as much as would be generated by burning 583,000 lbs of coal.



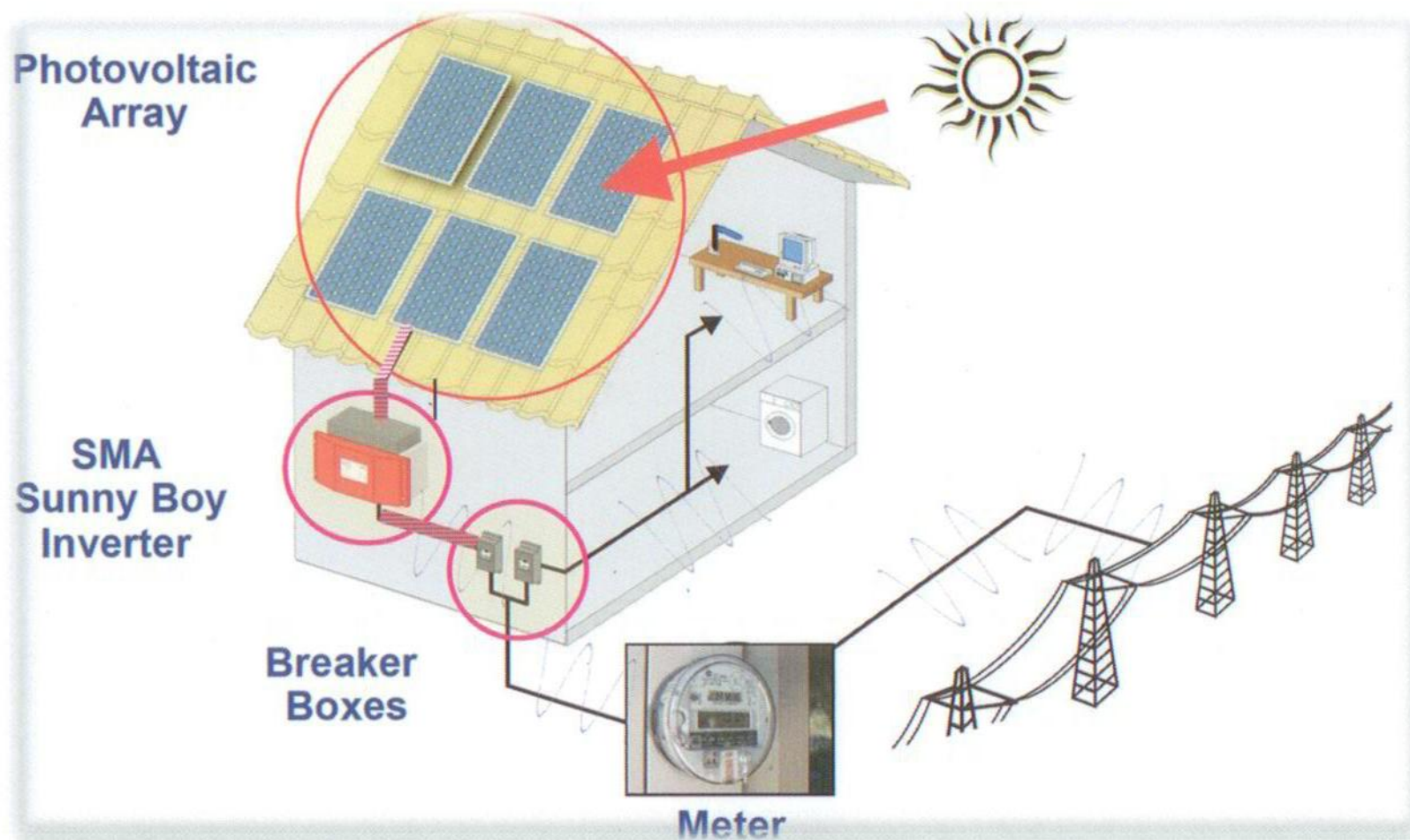
Every Hour , the Earth receives enough solar energy to power the entire planet for one year

Glossary

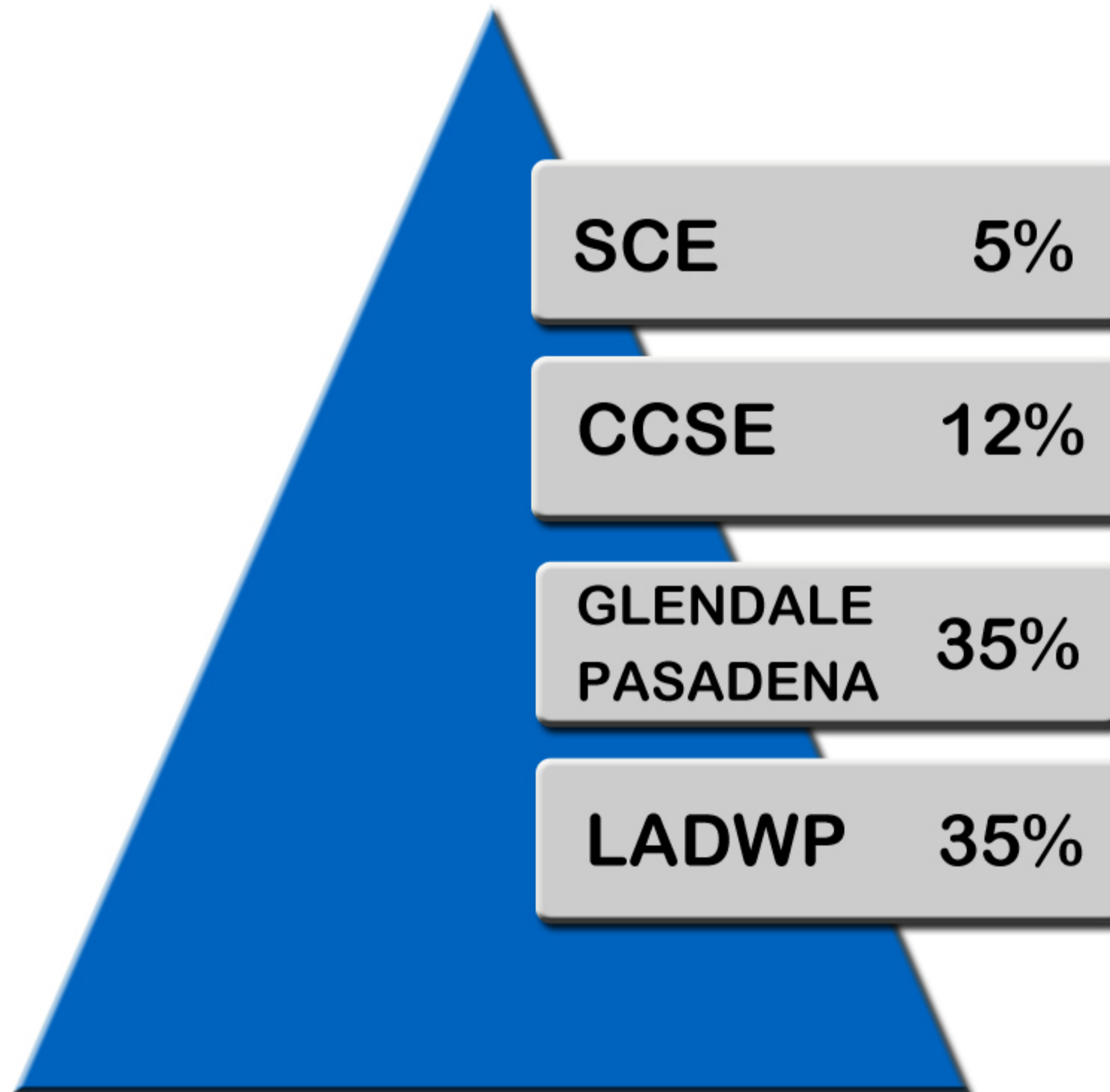
- PV Panel – Photovoltaic System
- DC – Direct Current
- AC – Alternate Current
- Inverter – Device Used to Convert DC into AC
- Grid-Tie – Solar System That Connected to Utility Grid



The Concept is Simple!

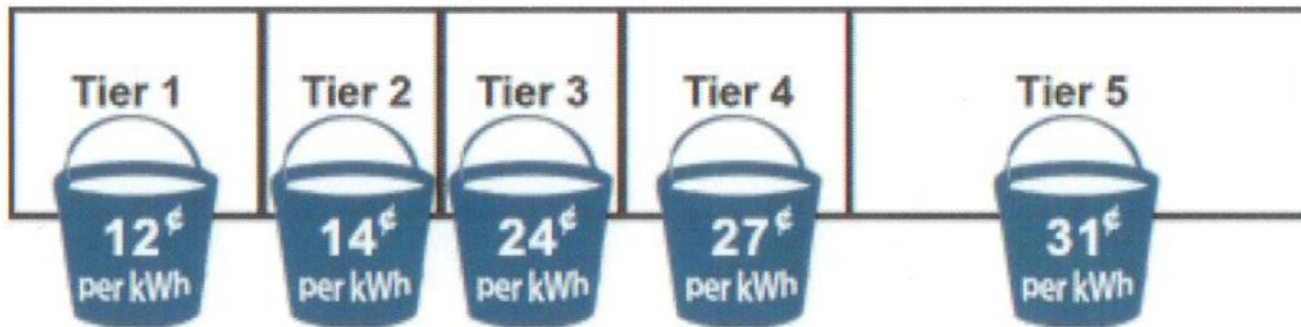


State and Utility Incentives



Understanding Your Bill

- 5-Tier System



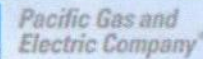
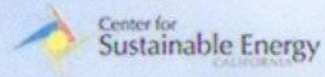
- Time of Use

	Monday	Tuesday	Wednesday	Thursday	Friday	Saturday	Sunday
8 a.m. – 10 a.m.			Lower Energy Rate				
10 a.m. – 6 p.m.			Highest Energy Rate				
6 p.m. – 8 a.m.			Lower Energy Rate				

Federal Rebate

- 30% of the system cost
- Expires December 31, 2016
- **Cash grants** in lieu of tax credit available for **commercial property** installed in 2009 and 2010

California Solar Initiative



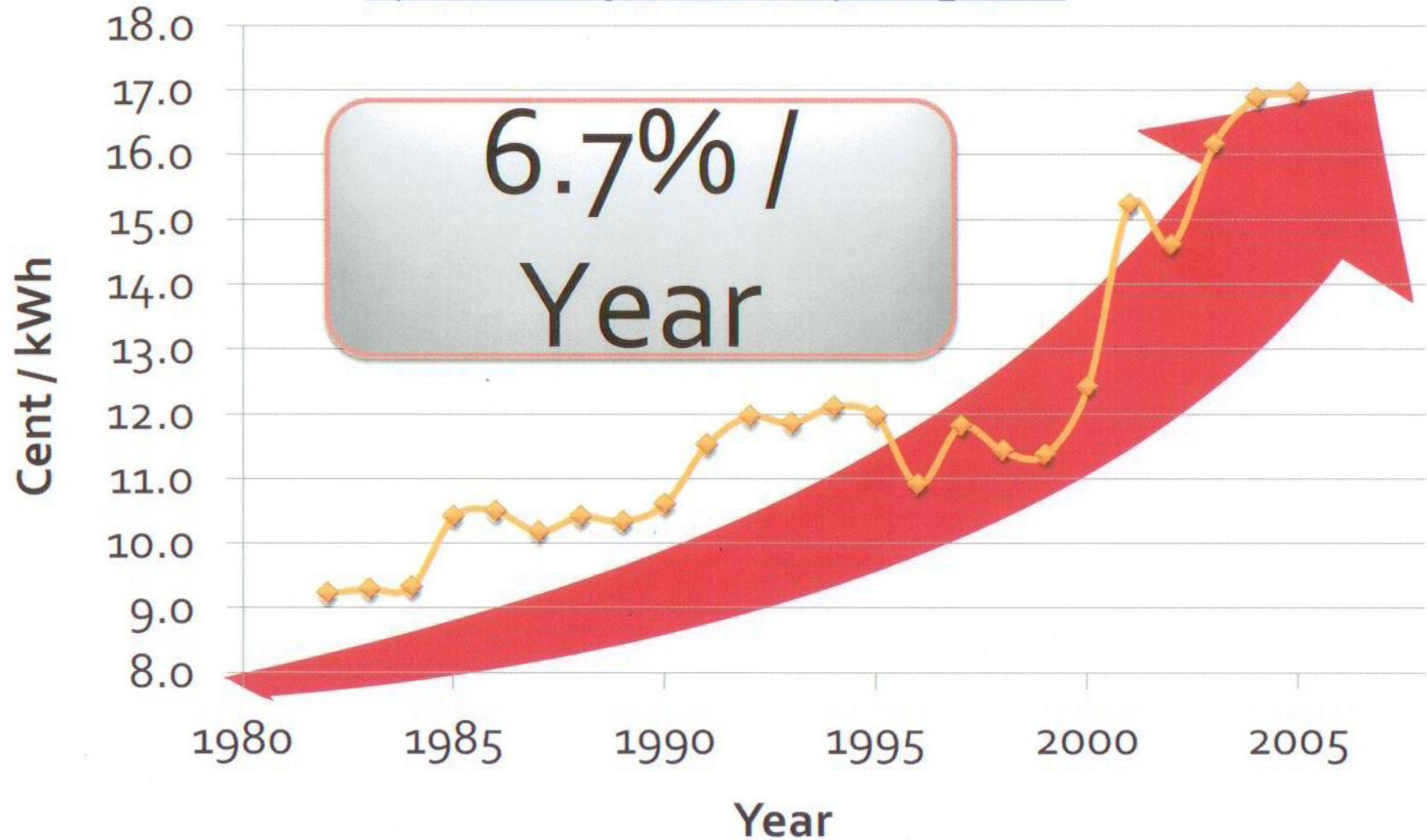
Last updated 05/11/09

Administrator	Customer Class *	Current Step	Initial MW in Step	Unused MW from Previous Steps	Revised Total MW in Step	Issued Conditional Reservation Letters (MW)	MW Remaining	MW Under Review
PGE	Residential	7	31.00	0.01	31.01	1.11	29.91	5.81
	Non-Residential	6	55.60	25.49	81.09	54.08	27.01	52.15
SCE	Residential	4	19.70	1.39	21.09	16.74	4.35	5.54
	Non-Residential	5	49.30	32.51	81.81	65.64	16.17	44.69
CCSE	Residential	7	7.3	0.03	7.33	0.89	6.44	0.12
	Non-Residential	6	13.10	3.32	16.42	15.14	1.27	2.15

Step	Statewide MW in Step	EPBB Payments (per Watt)			PBI Payments (per kWh)		
		Residential	Non-Residential		Residential	Non-Residential	
			Commercial	Gov't/ Non-Profit		Commercial	Gov't/ Non-Profit
1	50	n/a	n/a	n/a	n/a	n/a	n/a
2	70	\$2.50	\$2.50	\$3.25	\$0.39	\$0.39	\$0.50
3	100	\$2.20	\$2.20	\$2.95	\$0.34	\$0.34	\$0.46
4	130	\$1.90	\$1.90	\$2.65	\$0.26	\$0.26	\$0.37
5	160	\$1.55	\$1.55	\$2.30	\$0.22	\$0.22	\$0.32
6	190	\$1.10	\$1.10	\$1.85	\$0.15	\$0.15	\$0.26
7	215	\$0.65	\$0.65	\$1.40	\$0.09	\$0.09	\$0.19
8	250	\$0.35	\$0.35	\$1.10	\$0.05	\$0.05	\$0.15
9	285	\$0.25	\$0.25	\$0.90	\$0.03	\$0.03	\$0.12
10	350	\$0.20	\$0.20	\$0.70	\$0.03	\$0.03	\$0.10







SCE Historical Weighted Retail Price

http://www.eia.doe.gov/cneaf/electricity/esr/esr_sum.html



How much your bill will be?

Year	\$/Month	Annual Increase	Total Increase
1	\$100.00	-	-
2	\$106.70	\$80.40	\$80.40
3	\$113.85	\$85.79	\$166.19
4	\$121.48	\$91.53	\$257.72
5	\$129.62	\$97.67	\$355.39
6	\$138.30	\$104.21	\$459.60
7	\$147.57	\$118.64	\$689.44

Year	\$/Month	Annual Increase	Total Increase
10	\$ 179.26	\$135.07	\$951.10
			
15	\$ 247.91	\$186.81	\$1774.97
			
20	\$ 342.87	\$258.35	\$2914.39
			
25	\$ 474.18	\$357.30	\$4490.20

Return on Investment (ROI)

	Investment	ROI Before Tax	Return After Tax	ROI After Tax
Savings - CD	\$30,000	\$300 (1%)	\$196	0.65%
Stocks		\$2400 (8%)	\$1567	5.24%
Solar Power		\$4096	\$4096	13.60%

Calculation based on 1st year of service.

Success Stories



- Cerritos

- Old Bill: \$180
- New Bill: \$10

- “The folks at MSL Solar opened my eyes to the great savings and environmental benefits of generating my own electricity. I just love to watch the meter go backwards; at the same time I know I am helping our planet and my children’s future.”

—Sue Xu, CA



AN EDISON INTERNATIONAL COMPANY

Jul 22 '09 to Aug 20 '09

Details of your new charges

Your rate: DOMESTIC
Billing period: Jul 22 '09 to Aug 20 '09 (29 days)

Delivery charges

Basic charge	29 days x \$0.02900	\$0.84
Energy-Summer		
Tier 1 (within baseline)	296 kWh x \$0.07345	\$21.74
Tier 2 (up to 30%)	89 kWh x \$0.07345	\$6.54
Tier 3 (31% to 100%)	207 kWh x \$0.07345	\$15.20
Tier 4 (101% to 200%)	296 kWh x \$0.07345	\$21.74
Tier 5 (more than 200%)	675 kWh x \$0.07345	\$49.58
DWR bond charge	1,563 kWh x \$0.00491	\$7.67

Generation charges

DWR		
Energy summer	439 kWh x \$0.06225	\$27.33
SCE		
Energy-Summer		
Tier 1 (within baseline)	213 kWh x \$0.03076	\$6.55
Tier 2 (up to 30%)	64 kWh x \$0.05778	\$3.70
Tier 3 (31% to 100%)	149 kWh x \$0.19342	\$28.82
Tier 4 (101% to 200%)	213 kWh x \$0.24234	\$51.62
Tier 5 (more than 200%)	485 kWh x \$0.29125	\$141.28

Subtotal of your new charges		\$382.50
State tax	1,563 kWh x \$0.00022	\$0.34
Your new charges		\$382.93

Your Delivery charges include:

- \$10.25 transmission charges
- \$84.52 distribution charges
- \$0.92 nuclear decommissioning charges
- \$7.63 public purpose programs charge
- \$1.95 new system generation charge

Your Generation charges include:

- \$10.94 competition transition charge

Your overall energy charges include:

- \$3.47 franchise fees

Additional information:

- DWR provided 28.174% of the energy you used this month
- Service voltage: 240 volts
- Summer baseline allowance

"\$382.93"

Average cost per kilowatt hour



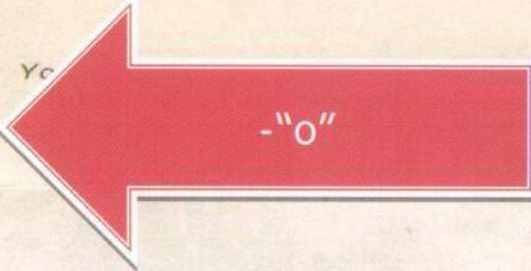
Understanding Your Bill...
Your usage for this billing period falls in the fifth tier. Energy usage is based upon a tiered structure. For most customers, the price you pay per kilowatt hour increases as you use more energy. The average cost per kilowatt hour (kWh) figures in the chart to the left are based on averages. Actual prices may vary. For more information visit www.sce.com/tier.

Oct 20 '09 to
Nov 19 '09

Service account [REDACTED]
Service address [REDACTED] JEFFREY AVE
CERRITOS, CA 90703
Rotating outage Group A041

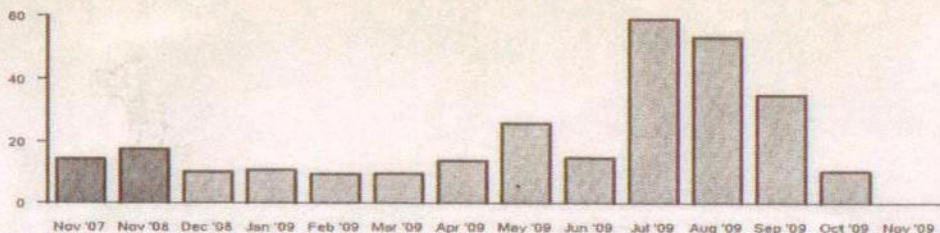
Compare the electricity you are using

Your current read for meter 85-713540 - Nov 19 '09 06985
Your previous read - Oct 20 '09 - 06985
Total electricity you used this month in kWh 0



Your daily average electricity usage (kWh)

2 Years ago: 15.03 Last year: 18.41 This year: N/A



Details of your new charges

Your rate: DOMESTIC
Billing period: Oct 20 '09 to Nov 19 '09 (30 days)

Delivery charges

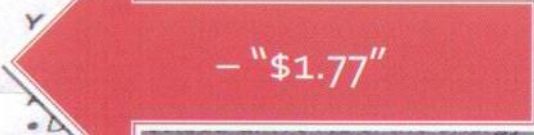
Basic charge	30 days x \$0.02900	\$0.87
Bal of minimum charge		\$0.90
Subtotal of your new charges		\$1.77
Your new charges		\$1.77

Your Delivery charges include:

- \$1.77 distribution charges

Y

- Delivered this month
- Service voltage: 240 volts
- Your winter baseline allowance: 276.0 kWh



Success Stories



- Pomona
 - Old Bill: \$50
 - New Bill: \$2

- "The installation was finished in only TWO days and my system started generating power on the third day!"

- Li Wei, CA



SOUTHERN CALIFORNIA
EDISON[®]

An EDISON INTERNATIONAL[®] Company

Jun 26 '09 to
Jul 28 '09

Details of your new charges

Your rate: DOMESTIC

Billing period: Jun 26 '09 to Jul 28 '09 (32 days)

Delivery charges

Basic charge	32 days x \$0.02900	\$0.93
Energy-Summer		
Tier 1 (within baseline)	319 kWh x \$0.07345	\$23.43
DWR bond charge	319 kWh x \$0.00491	\$1.57

Generation charges

DWR		
Energy summer	85 kWh x \$0.06225	\$5.29
SCE		
Energy-Summer		
Tier 1 (within baseline)	234 kWh x \$0.03076	\$7.20

Subtotal of your new charges		\$38.42
Pomona UUT	\$38.42 x 9.00000 %	\$3.46
State tax	319 kWh x \$0.00022	\$0.07
Your new charges		\$41.95

Your Delivery charges include:

- \$2.09 transmission charges
- \$20.05 distribution charges
- \$0.19 nuclear decommissioning charges
- \$1.56 public purpose programs charge
- \$0.40 new system generation charge

Your Generation charges include:

- \$2.23 competition transition charge

Your overall energy charges include:

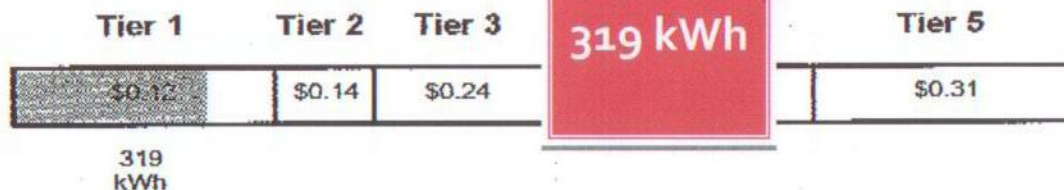
- \$0.35 franchise fees

Ad

-\$41.95

• Y
492 Wh

Average cost per kilowatt hour



Understanding Your Bill...

Your usage for this billing period falls in the first tier. Energy usage is based upon a tiered structure. For most customers, the price you pay per kilowatt hour increases as you use more energy. The average cost per kilowatt hour (kWh) figures in the chart to the left are based on averages. Actual prices may vary. For more information visit www.sce.com/tier.



SOUTHERN CALIFORNIA
EDISON

An EDISON INTERNATIONAL® Company

P.O. Box 600
Rosemead, CA
91771-0001
www.sce.com

Your electricity bill

LI, WEI / Page 1 of 6

For billing and service inquiries call 1-866-701-7868,
Mon - Fri 8 a.m. to 5 p.m.
For emergency services call 24 hrs a day, 7 days a week

Date bill prepared: Mar 30 '10

Customer account 2-30-484-3261

Service account **Mar 20 '10 to
April 18 '10**

Rotating outage Group N001

Your account summary

Amount of your last bill	\$3.31
Payment we received on Mar 10 '10 - thank you	-\$3.31
Balance forward	\$0.00
Your new charges	\$1.99
Total amount you owe by Apr 19 '10	\$1.99

Net energy metering annual billing month #1. Your cumulative tracked energy total is -\$14.32.

Please see actual meter read.

-\$1.99

Compare the electricity you are using

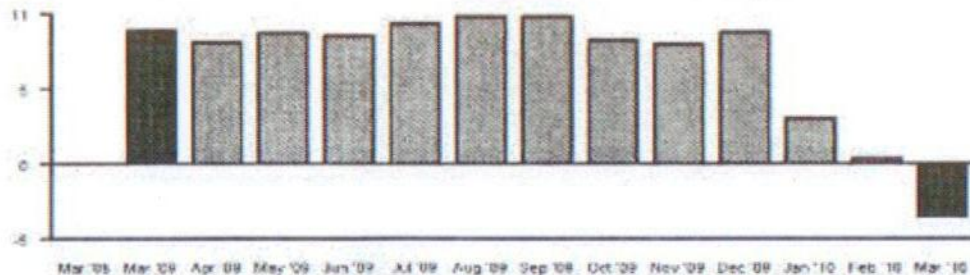
Your current read for meter 308-306472 - Mar 29 '10	50999
Your previous read - Feb 26 '10	- 51116
Total electricity you used this month in kWh	- 117

Your meter read will be on or about Apr 27 '10.

- 177

Your daily average electricity usage (kWh)

2 Years ago: N/A Last year: 9.48 This year: -3.77



Details of your new charges

Your rate: DOMESTIC
 Billing period: Feb 26 '10 to Mar 29 '10 (31 days)

Delivery charges

Energy-Winter		
Tier 1 (within baseline)	-11 kWh x \$0.07373	-\$0.81
Tier 1 (within baseline)	-106 kWh x \$0.04033	-\$4.27
DWR bond charge	-117 kWh x \$0.00515	-\$0.60

Generation charges

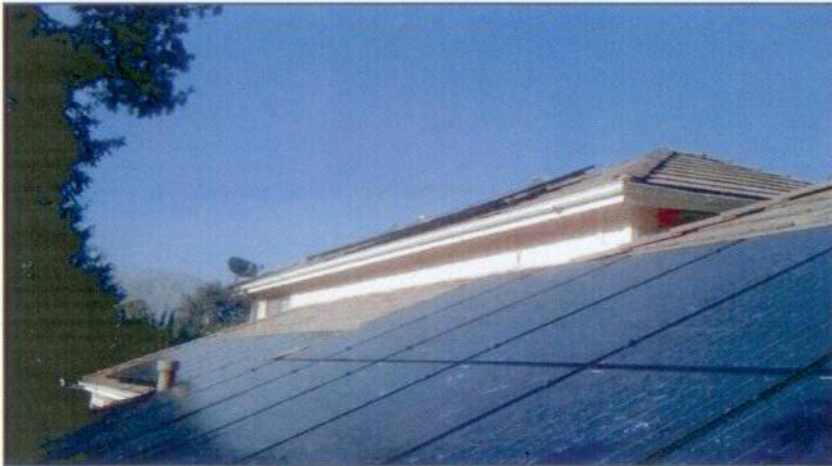
DWR		
Energy winter	-37 kWh x \$0.03763	-\$1.39
SCE		
Energy-Winter		
Tier 1 (within baseline)	-8 kWh x \$0.04477	-\$0.36
Tier 1 (within baseline)	-72 kWh x \$0.09564	-\$6.89
Energy Charge Total		-\$14.32

Additional information:

- Your previous month tracked energy charge total: \$0.00
- Your current month tracked energy charge total: -\$14.32
- At the end of month 1, your cumulative tracked energy charge year to date: -\$14.32



Success Stories



- Arcadia
 - Old Bill: \$700
 - New Bill: \$450

- "I run my business from home. That is why my electric bill is very high every month. To me, solar makes sense because of all the incentives and increase in home value. MSL solar did a great job!"
—Eric Yap, CA.

Success Stories



- Arcadia
 - Old Bill: \$200
 - New Bill: \$20

Why Home Solar Depot

- Full Service Solar Provider
- California certified installer
- Quality installation
- Highest quality solar panels and equipment
- Free Consultation
- Professional design
- Active interaction with the government and power companies

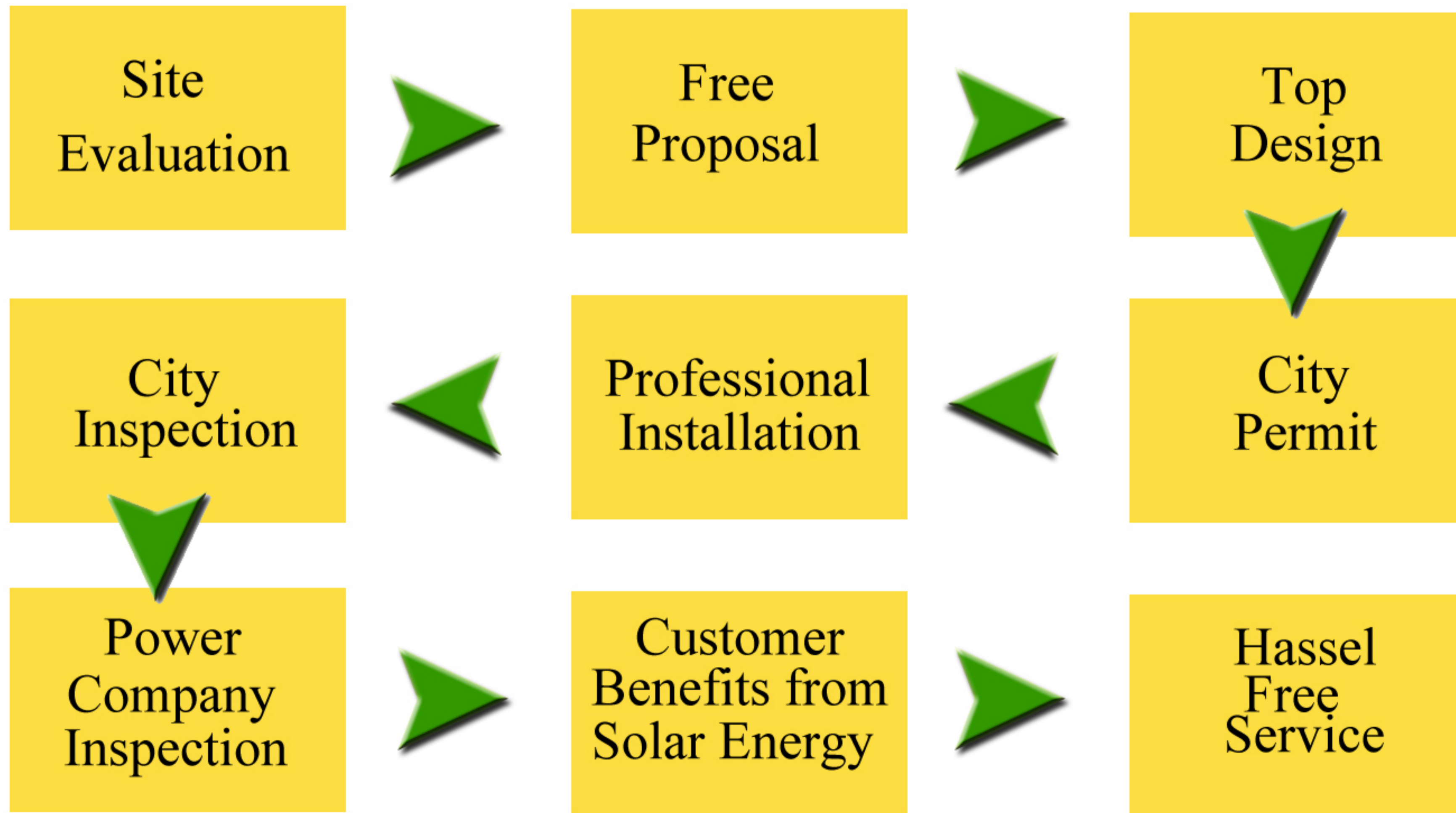
Full Service Solar Provider



Full Service

- ☀ Solar power system design
- ☀ Financing
- ☀ Professional installation
- ☀ Project management
- ☀ Online monitoring system
- ☀ 25 years warranty on solar panels

From Start to Finish



Average Estimated Time of Completion: 3 months

Solar Purchase Plan

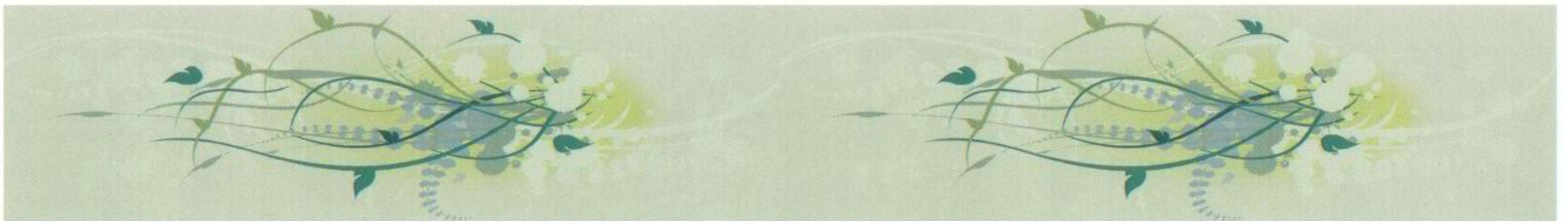


- 1. Reduce electric bill**
- 2. Highest ROI 15% - 20% or more**
- 3. Home value rises an average \$20 for every \$1 reduction in annual utility bills**
- 4. California State Law in 2013. All new built homes must install a solar power system**
- 5. Sell house faster**
- 6. HSD 10 years full coverage**
- 7. Manufacture 25 years warranty on solar panels**

Solar System Cost

Size of solar system is based on

- Monthly electric bill
- House and roof conditions
- Surrounding conditions
- Requirements of the city



HSD – Smart Choice

- Go Green, give your children a beautiful Earth
- Go Solar, start saving now
- Full service provider
- Latest technology
- Peace in mind

Solar – Energy Solution for Our Kids!



Call for Your Free Site Evaluation Today!